

CJSRX

Extraction units 400 °C/2h to work outside the fire risk zone, driven by transmission with a backward curved impeller



- Fan:**
- Galvanised steel sheet casing.
 - Backward curved impeller made of painted sheet steel.
 - Glands for cable entry.
 - Approved in accordance with standard EN 12101-3, with certificate no.: 0370-CPR-1578.
 - Standardised set of pulleys, belts and guards in accordance with standard ISO-13857.
 - Maximum temperature of air to be carried: -25 °C +150 °C.

- Motor:**
- Motors with IE3 efficiency for powers equal to or greater than 0.75 kW, except single-phase, 2-speed and 8-pole.

- Class F motors with ball bearings and IP55 protection.
- Three-phase 230/400 V 50 Hz (up to 4 kW) and 400/690 V 50 Hz (powers greater than 4 kW).
- Working temperature: -25 °C +50 °C.

- Finish:**
- Galvanised sheet steel with thermal and acoustic insulation.

- On request:**
- Different outlet positions.
 - Circular outlet.

Order code



CJSRX: Extraction units 400 °C/2h to work outside the fire risk zone, driven by transmission with a backward curved impeller

Impeller size

Motor power (HP)

F400: 400 °C/2h approved

Technical characteristics

Model	Speed (r/min)	Maximum admissible current (A)			Installed power (kW)	Maximum flow rate (m³/h)	Sound pressure level' dB (A) Irradiated	Approx. weight (Kg)
		230V	400V	690V				
CJSRX-315-1-F-400 IE3	2100	2.82	1.62		0.75	3435	75	111
CJSRX-315-1.5-F-400 IE3	2385	4.03	2.34		1.10	3905	78	119
CJSRX-315-2-F-400 IE3	2650	5.34	3.07		1.50	4335	80	124
CJSRX-315-3-F-400 IE3	2975	7.32	4.21		2.20	4870	83	129
CJSRX-355-0.75-F-400	1580	2.17	1.25		0.55	3685	76	126
CJSRX-355-1-F-400 IE3	1765	2.82	1.62		0.75	4120	78	127
CJSRX-355-1.5-F-400 IE3	2010	4.07	2.34		1.10	4690	81	135
CJSRX-355-2-F-400 IE3	2225	5.34	3.07		1.50	5190	83	140
CJSRX-355-3-F-400 IE3	2465	7.32	4.21		2.20	5750	86	144
CJSRX-355-4-F-400 IE3	2615	10.00	5.77		3.00	6100	87	150
CJSRX-400-1-F-400 IE3	1465	2.82	1.62		0.75	4855	78	155
CJSRX-400-1.5-F-400 IE3	1665	4.07	2.34		1.10	5515	81	160
CJSRX-400-2-F-400 IE3	1845	5.41	3.11		1.50	6110	83	171
CJSRX-400-3-F-400 IE3	2045	7.93	4.56		2.20	6775	85	172

Technical characteristics

Model	Speed (r/min)	Maximum admissible current (A)			Installed power (kW)	Maximum flow rate (m³/h)	Sound pressure level¹ dB (A) Irradiated	Approx. weight (Kg)
		230V	400V	690V				
CJSRX-400-4-F-400 IE3	2275	10.00	5.77		3.00	7535	88	174
CJSRX-400-5.5-F-400 IE3	2610	13.00	7.50		4.00	8645	91	181
CJSRX-450-1-F-400 IE3	1220	2.82	1.62		0.75	5620	77	186
CJSRX-450-1.5-F-400 IE3	1390	4.07	2.34		1.10	6405	80	189
CJSRX-450-2-F-400 IE3	1540	5.41	3.11		1.50	7095	82	200
CJSRX-450-3-F-400 IE3	1750	7.93	4.56		2.20	8060	85	201
CJSRX-450-4-F-400 IE3	1980	10.70	6.15		3.00	9120	87	203
CJSRX-450-5.5-F-400 IE3	2095	13.90	8.00		4.00	9650	89	210
CJSRX-450-7.5-F-400 IE3	2420		10.10	5.86	5.50	11150	92	253
CJSRX-450-10-F-400 IE3	2670		14.10	8.17	7.50	12300	94	229
CJSRX-500-1.5-F-400 IE3	1140	4.07	2.34		1.10	7330	79	228
CJSRX-500-2-F-400 IE3	1270	5.41	3.11		1.50	8165	81	238
CJSRX-500-3-F-400 IE3	1445	7.93	4.56		2.20	9290	84	240
CJSRX-500-4-F-400 IE3	1635	10.70	6.15		3.00	10510	87	246
CJSRX-500-5.5-F-400 IE3	1800	13.90	8.00		4.00	11570	89	252
CJSRX-500-7.5-F-400 IE3	2000		10.30	5.97	5.50	12855	91	291
CJSRX-500-10-F-400 IE3	2100		13.90	8.06	7.50	13500	92	267
CJSRX-500-15-F-400 IE3	2300		20.00	11.60	11.00	14785	94	321
CJSRX-560-2-F-400 IE3	1055	5.41	3.11		1.50	10375	80	304
CJSRX-560-3-F-400 IE3	1200	7.93	4.56		2.20	11800	83	299
CJSRX-560-4-F-400 IE3	1340	10.70	6.15		3.00	13175	85	306
CJSRX-560-5.5-F-400 IE3	1475	13.90	8.00		4.00	14505	88	312
CJSRX-560-7.5-F-400 IE3	1645		10.30	5.97	5.50	16175	90	351
CJSRX-560-10-F-400 IE3	1820		13.90	8.06	7.50	17895	92	327
CJSRX-560-15-F-400 IE3	1875		20.90	12.10	11.00	18440	93	381
CJSRX-630-3-F-400 IE3	1010	7.93	4.56		2.20	12120	79	339
CJSRX-630-4-F-400 IE3	1140	10.70	6.15		3.00	13680	81	345
CJSRX-630-5.5-F-400 IE3	1255	13.90	8.00		4.00	15060	83	351
CJSRX-630-7.5-F-400 IE3	1395		10.30	5.97	5.50	16740	86	390
CJSRX-630-10-F-400 IE3	1550		13.90	8.06	7.50	18600	88	366
CJSRX-630-15-F-400 IE3	1600		20.90	12.10	11.00	19200	89	420
CJSRX-630-20-F-400 IE3	1900		27.90	16.20	15.00	22800	92	442
CJSRX-710-4-F-400 IE3	960	10.70	6.15		3.00	17065	82	416
CJSRX-710-5.5-F-400 IE3	1060	13.90	8.00		4.00	18845	84	422
CJSRX-710-7.5-F-400 IE3	1180		10.30	5.97	5.50	20980	86	461
CJSRX-710-10-F-400 IE3	1305		13.90	8.06	7.50	23200	89	456
CJSRX-710-15-F-400 IE3	1355		20.90	12.10	11.00	24090	89	491
CJSRX-710-20-F-400 IE3	1670		27.90	16.20	15.00	29690	94	513
CJSRX-710-25-F-400 IE3	1750		35.10	20.30	18.50	31110	95	546

1. The noise level values are pressures in dB(A) measured at a distance of 3 metres in a free field.

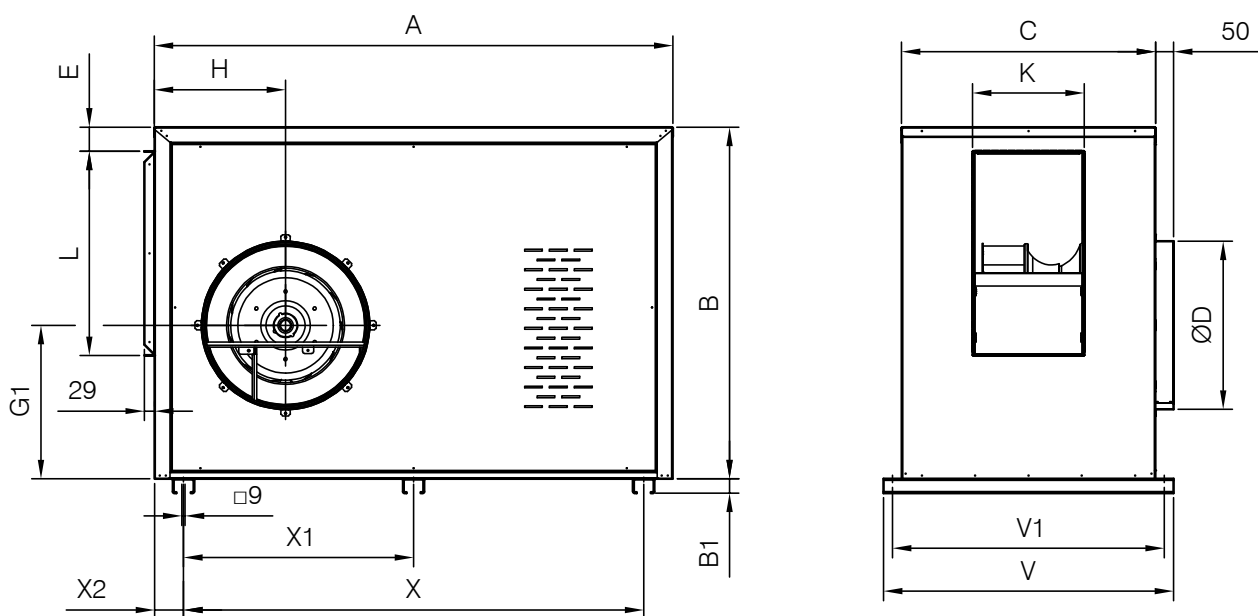


Erp. (Energy Related Products)

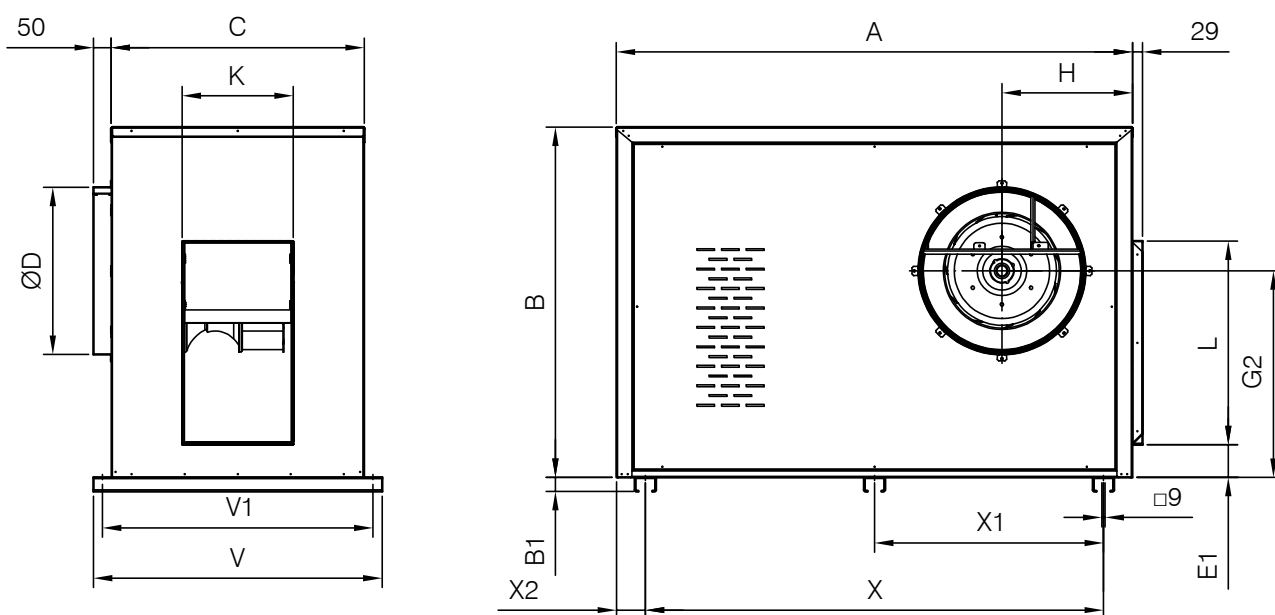
Information on Directive 2009/125/EC can be downloaded from the SODECA website or the QuickFan selector programme.

Dimensions mm

**Standard supply horizontal impulsion
(H) RD 90**

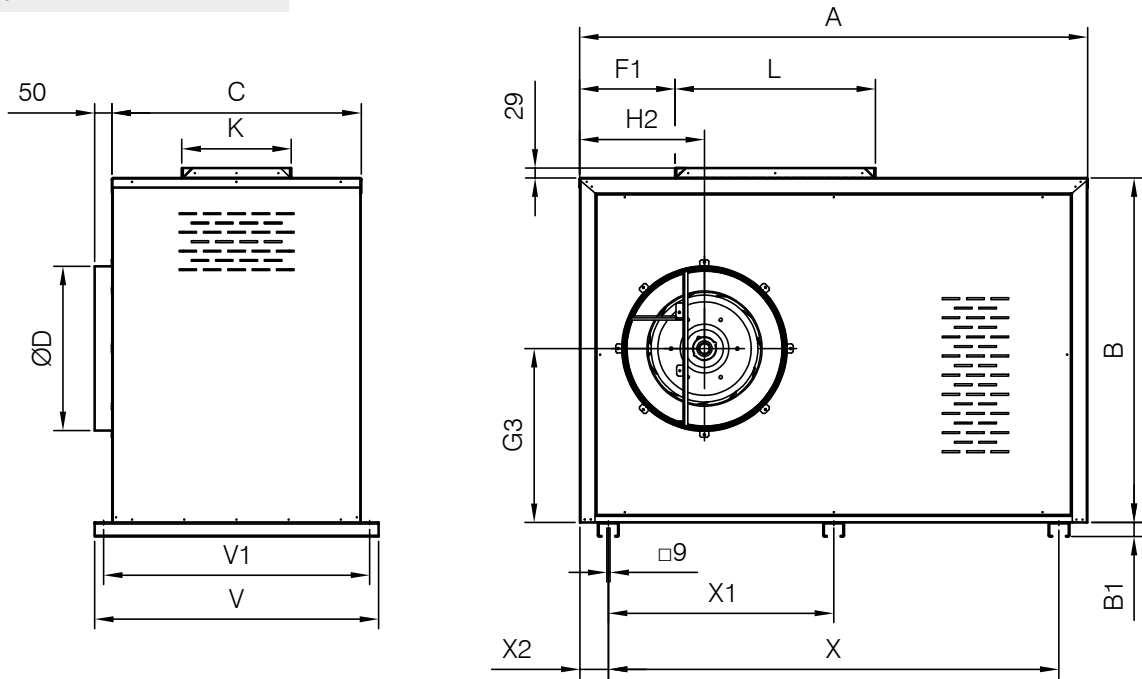


**Horizontal impulsion on request
(H) LG 90**

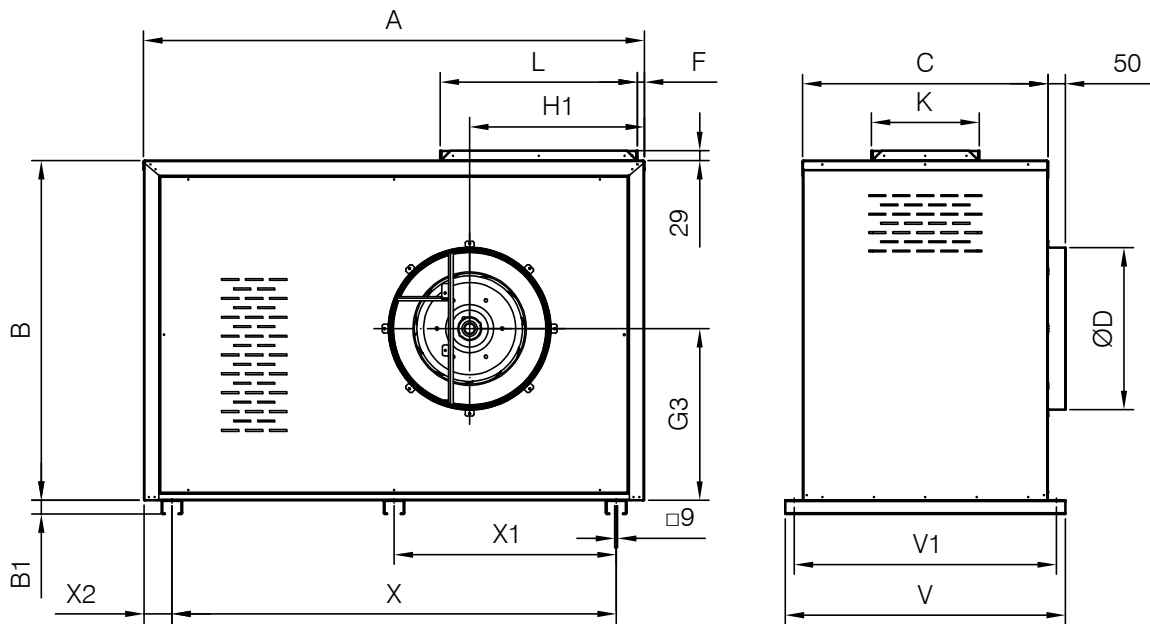


Dimensions mm

Vertical impulsion on request
(V) RD 0



Vertical impulsion on request
(V) LG 0



Dimensions mm

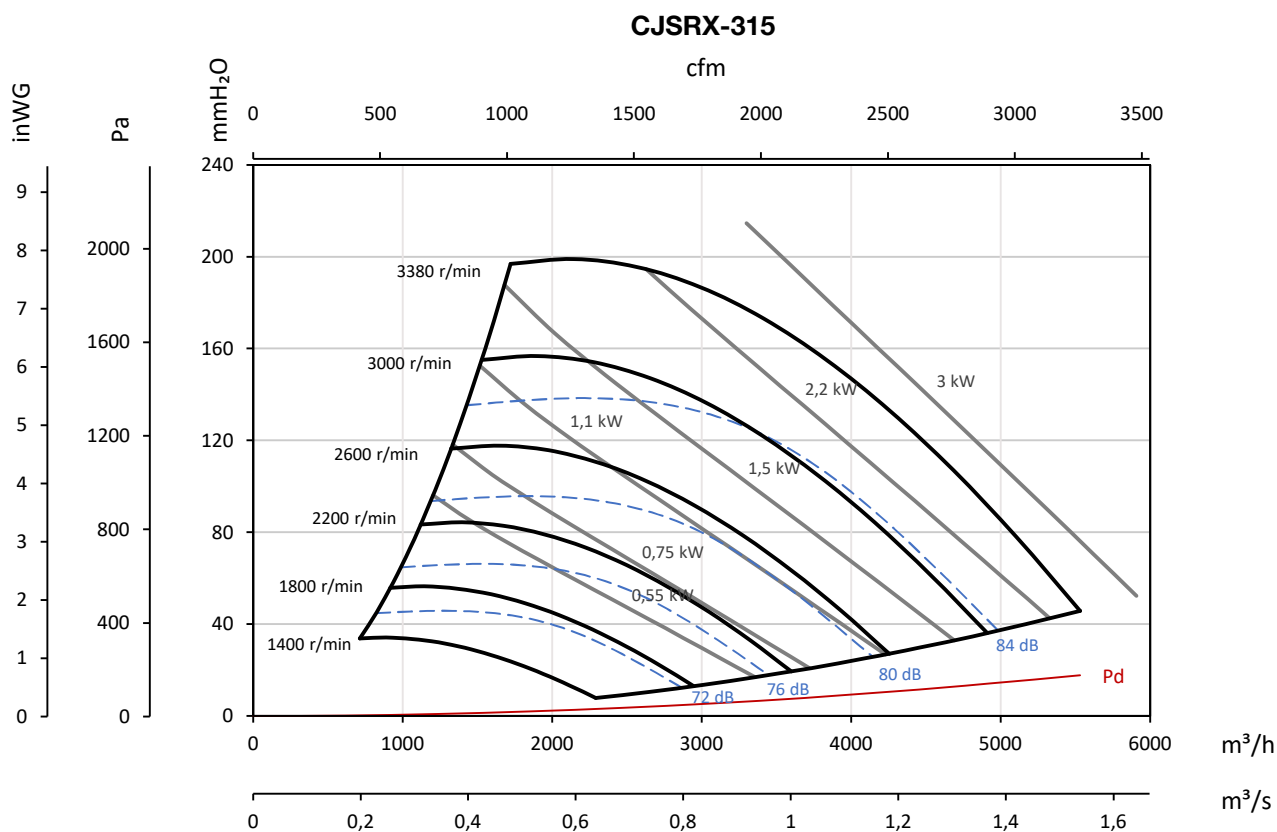
	A	B	B1	C	ØD	E	E1	F	F1	G1	G2	G3
CJSRX-315	1000	720	40	600	327	64	75	67	238	311	419	358
CJSRX-355	1200	800	40	650	370	67	77	65	264	346	464	397
CJSRX-400	1400	900	40	680	420	68	93	55	281	396	529	457
CJSRX-450	1460	990	40	716	470	68	92	20	274	432	583	500
CJSRX-500	1660	1080	40	760	519	66	96	26	301	471	639	544
CJSRX-560	1660	1190	40	810	588	65	93	24	339	516	701	599
CJSRX-630	1800	1322	40	850	652	70	93	27	456	568	777	661
CJSRX-710	2150	1484	40	910	722	60	112	107	513	654	881	761

	H	H1	H2	K	L	V	V1	X	X1	X2
CJSRX-315	315	411	303	229	410	700	670	682	341	159
CJSRX-355	353	454	335	253	459	750	720	920	460	140
CJSRX-400	371	491	359	280	513	780	750	1175	588	113
CJSRX-450	370	510	359	314	575	816	786	1295	648	83
CJSRX-500	412	568	401	350	644	860	830	1475	738	93
CJSRX-560	462	632	450	389	721	910	880	1475	738	93
CJSRX-630	490	709	578	438	807	950	920	1615	808	93
CJSRX-710	525	875	649	484	905	1010	980	1274	637	120

Characteristic curves

Q= Flow rate in m³/h, m³/s and cfm

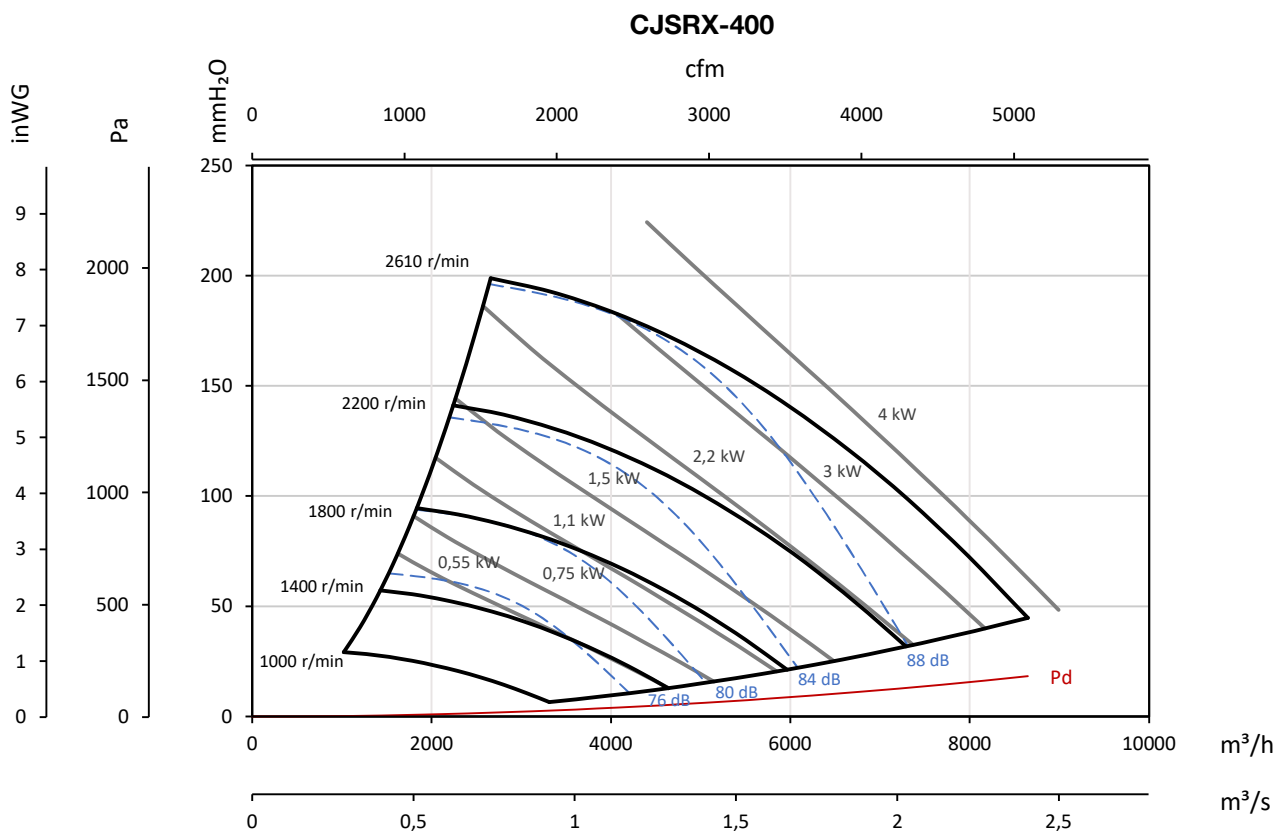
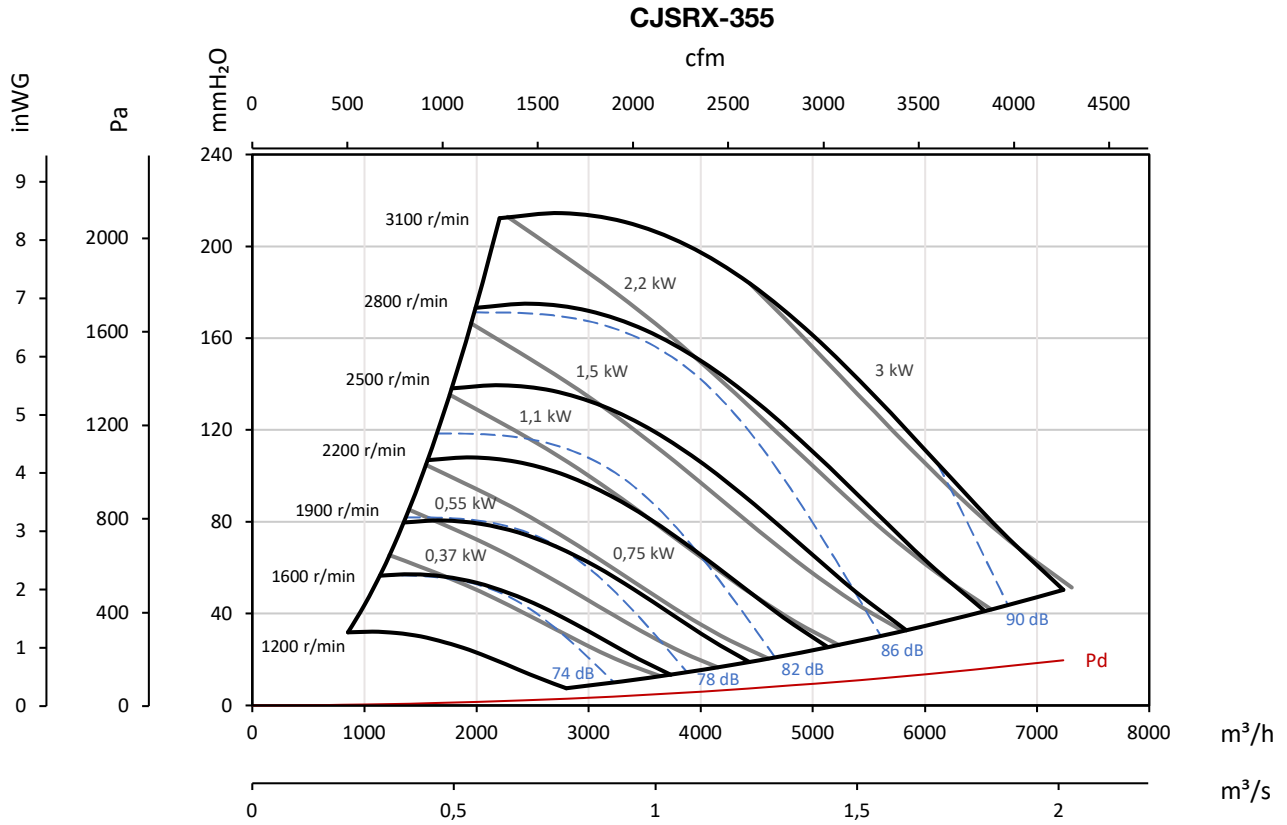
Pe= Static pressure in mm H₂O, Pa and inwg



Characteristic curves

Q= Flow rate in m³/h, m³/s and cfm

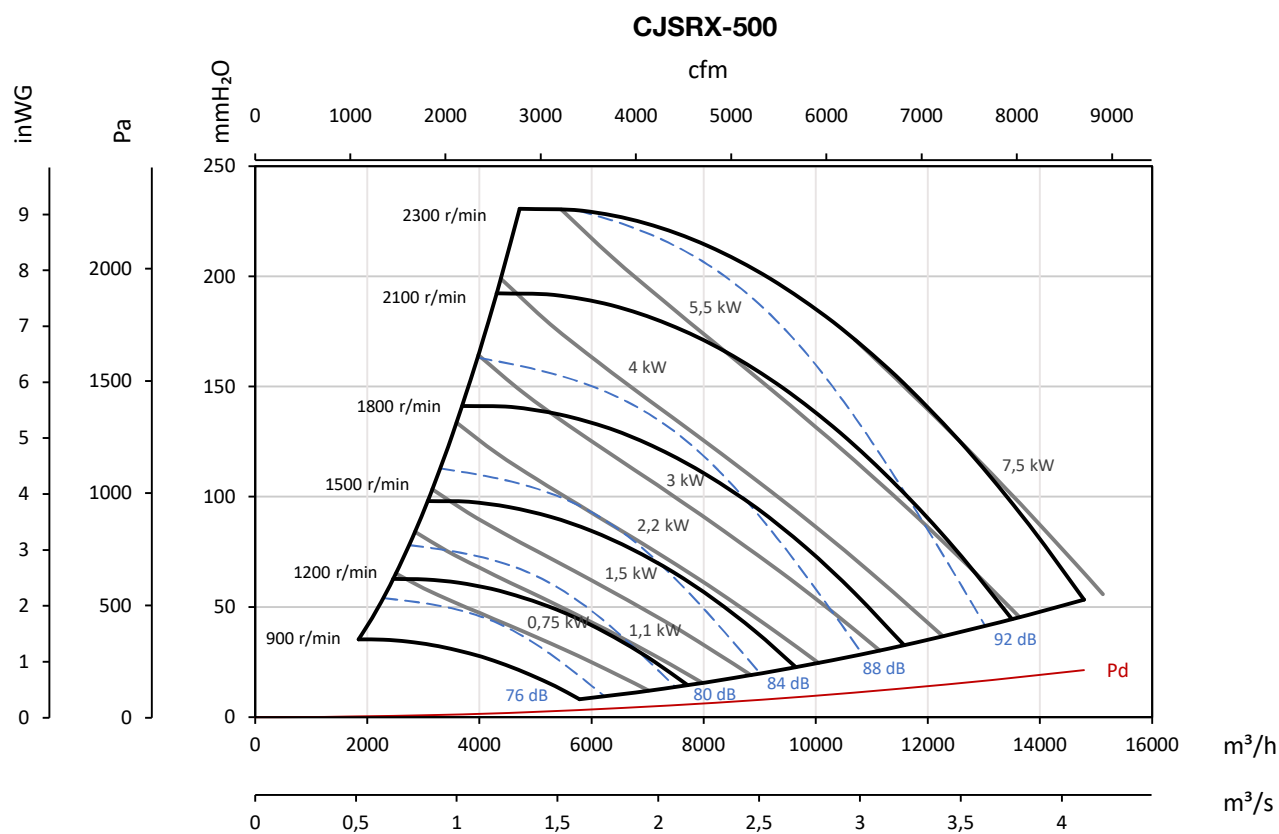
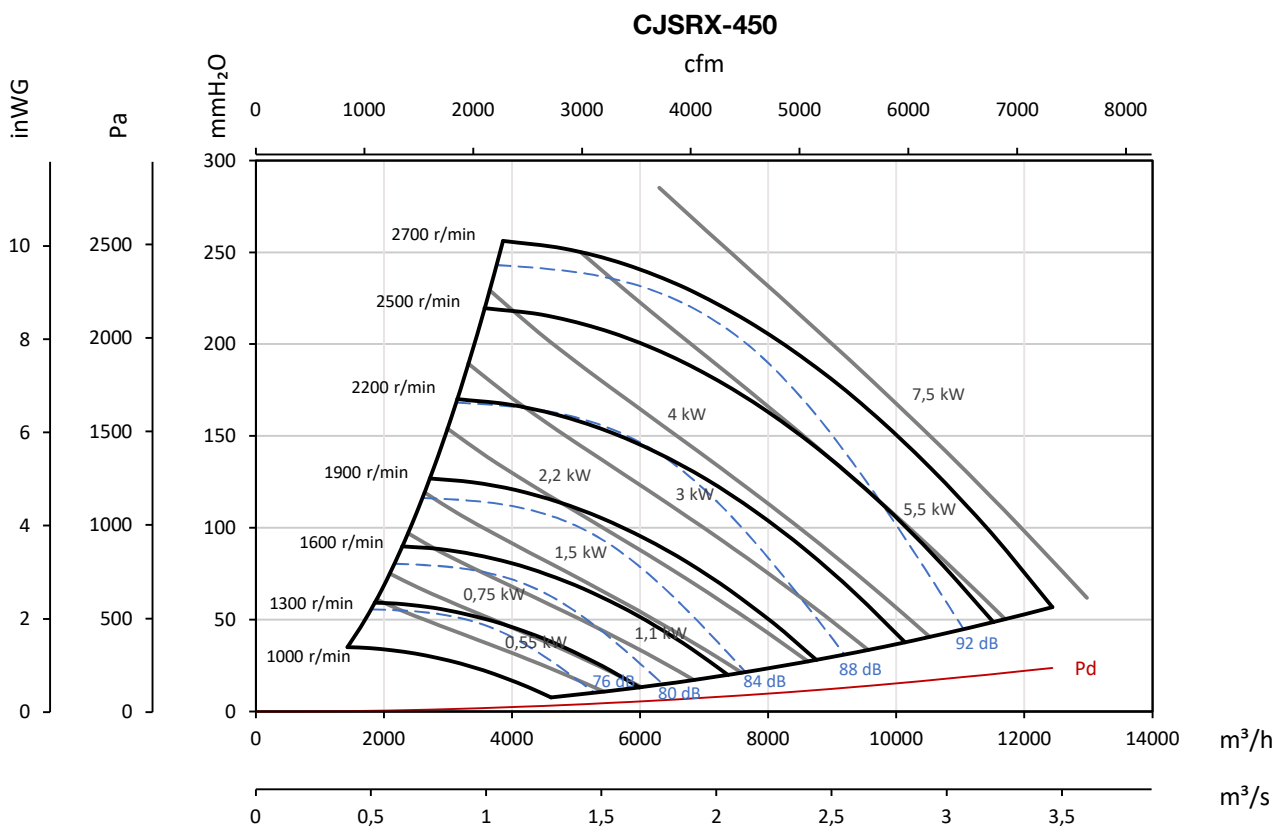
Pe= Static pressure in mm H₂O, Pa and inWG



Characteristic curves

Q= Flow rate in m³/h, m³/s and cfm

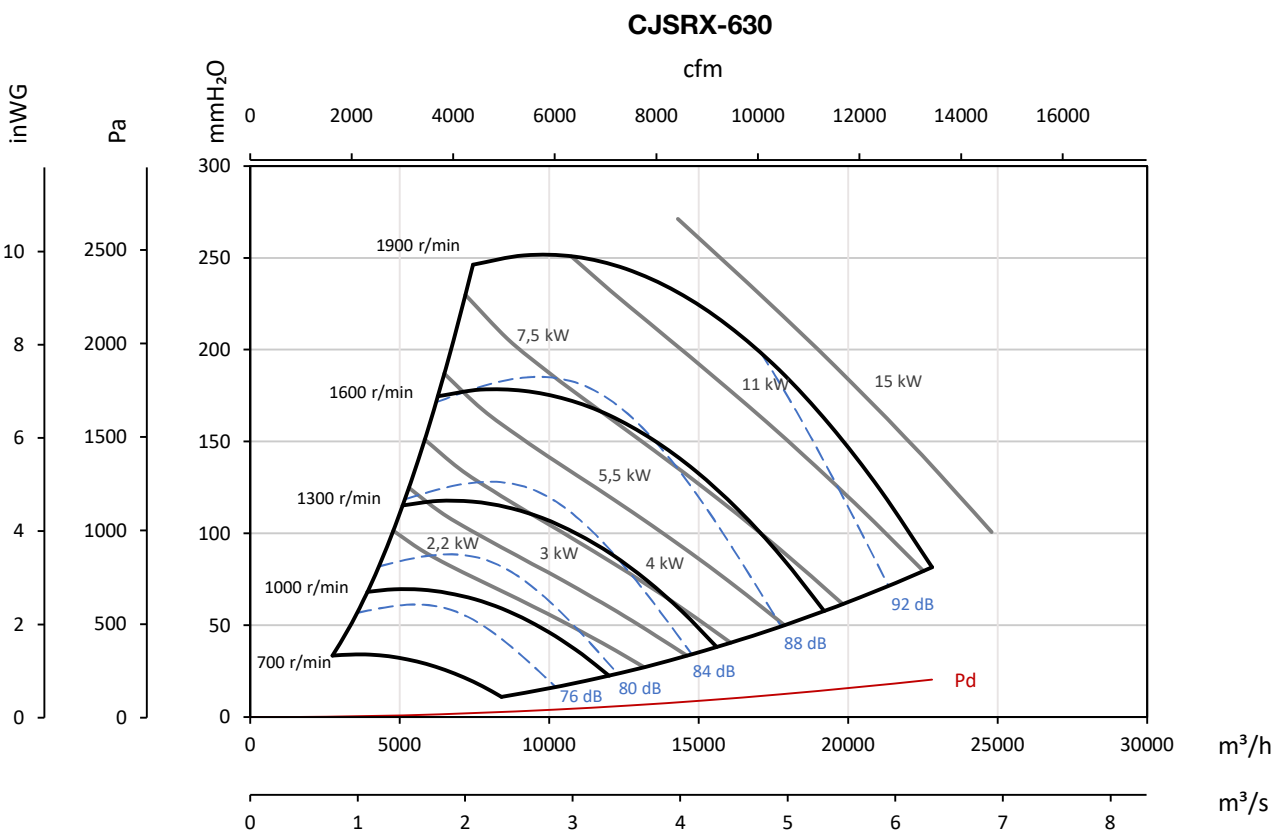
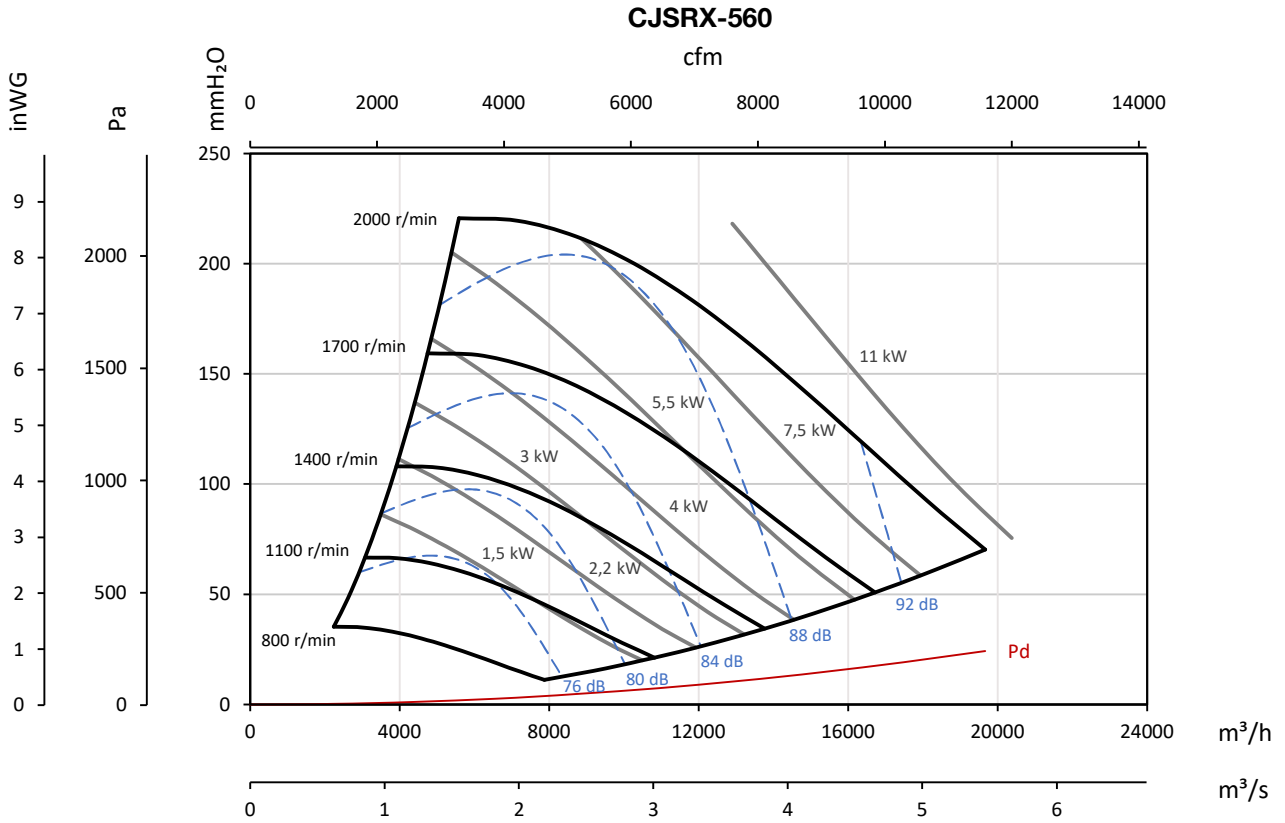
Pe= Static pressure in mm H₂O, Pa and inWG



Characteristic curves

Q= Flow rate in m³/h, m³/s and cfm

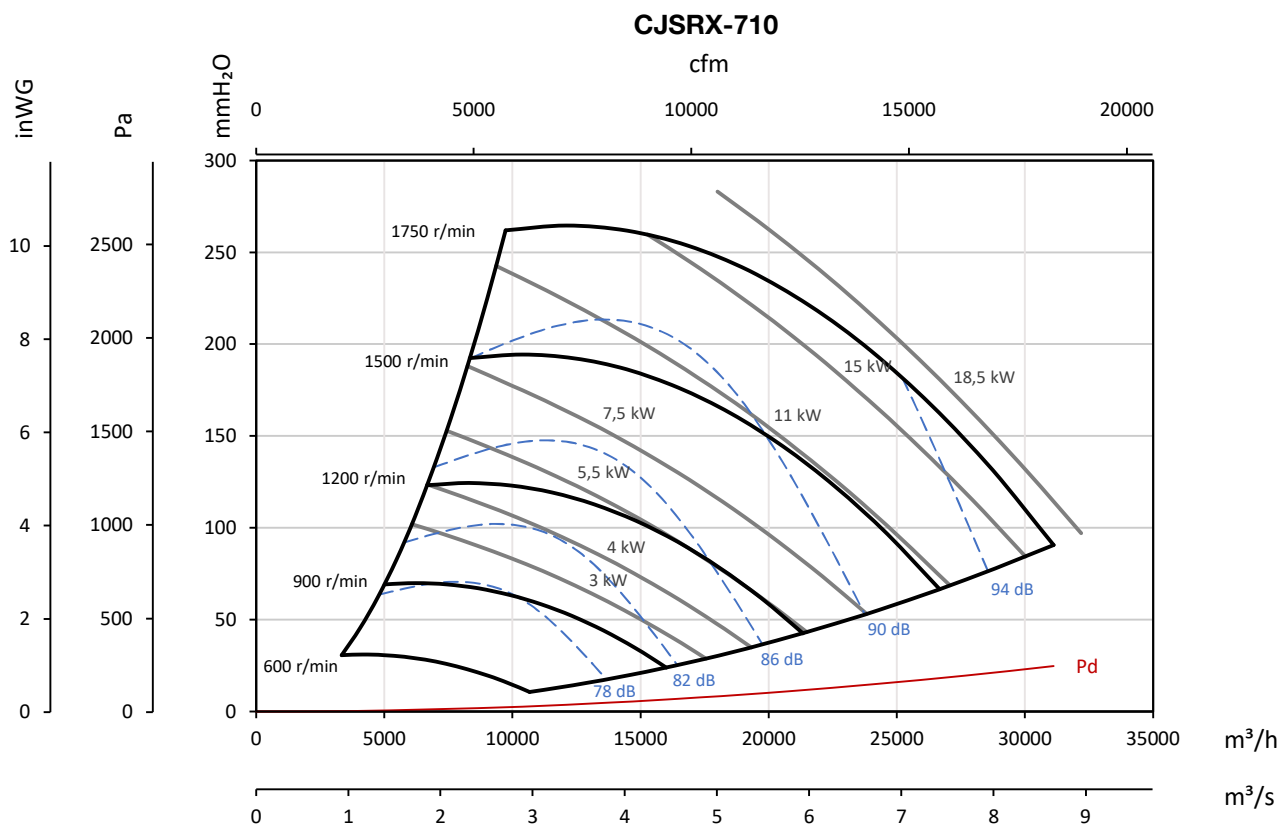
Pe= Static pressure in mm H₂O, Pa and inWG



Characteristic curves

Q= Flow rate in m³/h, m³/s and cfm

Pe= Static pressure in mm H₂O, Pa and inWG



Accessories

