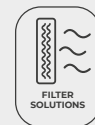


CJBX/ALF

Unidades de ventilación a transmisión con chapa prelacada, filtro incorporado y perfiles de aluminio



Ventilador:

- Unidades de ventilación equipadas con ventiladores de doble aspiración de las series CBX, CBXC y CBXR.
- Estructura en perfiles de aluminio, con aislamiento térmico y acústico.
- Turbina a acción en chapa de acero galvanizado.
- Prensaestopas para entrada de cable.

- Trifásico 230/400 V 50 Hz (hasta 4 kW) y 400/690 V 50 Hz (potencias superiores a 4 kW).
- Temperatura máxima del aire a transportar: -20 °C +60 °C.

Acabado:

- Anticorrosivo en chapa de acero prelacada y perfiles de aluminio.

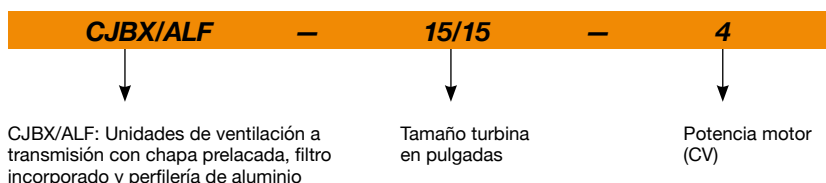
Motor:

- Motores con eficiencia IE3 para potencias iguales o superiores a 0,75 kW, excepto monofásicos, 2 velocidades y 8 polos.
- Motores clase F con rodamientos a bolas y protección IP55.

Bajo demanda:

- Con impulsión circular.

Código de pedido



Características técnicas

| Modelo | Velocidad (r/min) | Intensidad máxima admisible (A) | | | Potencia instalada (kW) | Caudal máximo (m³/h) | Nivel presión sonora dB (A) | Peso aprox. (Kg) | Tipo montaje | According ErP |
|------------------------|----------------------|---------------------------------|------|------|----------------------------|-------------------------|--------------------------------|---------------------|--------------|---------------|
| | | 230V | 400V | 690V | | | | | | |
| CJBX/ALF-7/7-0.75 | 1400 | 2,92 | 1,69 | | 0,55 | 1200 | 56 | 41 | A | 2018 |
| CJBX/ALF-7/7-1 IE3 | 1600 | 3,10 | 1,79 | | 0,75 | 1450 | 58 | 43 | A | 2018 |
| CJBX/ALF-9/9-0.25 | 825 | 1,23 | 0,71 | | 0,18 | 1700 | 45 | 48 | A | 2018 |
| CJBX/ALF-9/9-0.33 | 920 | 1,66 | 0,96 | | 0,25 | 1800 | 48 | 50 | A | 2018 |
| CJBX/ALF-9/9-0.5 | 1020 | 2,02 | 1,17 | | 0,37 | 2200 | 51 | 52 | A | 2018 |
| CJBX/ALF-9/9-0.75 | 1050 | 2,92 | 1,69 | | 0,55 | 2900 | 55 | 55 | A | 2018 |
| CJBX/ALF-9/9-1 IE3 | 1070 | 3,10 | 1,79 | | 0,75 | 3200 | 56 | 56 | A | 2018 |
| CJBX/ALF-9/9-1.5 IE3 | 1260 | 4,03 | 2,32 | | 1,10 | 3750 | 60 | 59 | A | 2018 |
| CJBX/ALF-10/10-0.75 | 845 | 2,92 | 1,69 | | 0,55 | 3800 | 56 | 57 | A | 2018 |
| CJBX/ALF-10/10-1 IE3 | 960 | 3,10 | 1,79 | | 0,75 | 4175 | 58 | 59 | A | 2018 |
| CJBX/ALF-10/10-1.5 IE3 | 1070 | 4,03 | 2,32 | | 1,10 | 4800 | 61 | 61 | A | 2018 |
| CJBX/ALF-10/10-2 IE3 | 1140 | 5,96 | 3,44 | | 1,50 | 5400 | 63 | 65 | A | 2018 |
| CJBX/ALF-12/12-0.5 | 595 | 2,02 | 1,17 | | 0,37 | 4200 | 52 | 69 | A | 2018 |
| CJBX/ALF-12/12-0.75 | 675 | 2,92 | 1,69 | | 0,55 | 4800 | 54 | 71 | A | 2018 |
| CJBX/ALF-12/12-1 IE3 | 765 | 3,10 | 1,79 | | 0,75 | 5400 | 57 | 72 | A | 2018 |
| CJBX/ALF-12/12-1.5 IE3 | 855 | 4,03 | 2,32 | | 1,10 | 5800 | 59 | 75 | A | 2018 |
| CJBX/ALF-12/12-2 IE3 | 965 | 5,96 | 3,44 | | 1,50 | 6500 | 62 | 79 | A | 2018 |

Características técnicas

| Modelo | Velocidad (r/min) | Intensidad máxima admisible (A) | | | Potencia instalada (kW) | Caudal máximo (m³/h) | Nivel presión sonora dB (A) | Peso aprox. (Kg) | Tipo montaje | According ErP |
|------------------------|----------------------|---------------------------------|-------|-------|----------------------------|-------------------------|--------------------------------|---------------------|--------------|---------------|
| | | 230V | 400V | 690V | | | | | | |
| CJBX/ALF-12/12-3 IE3 | 1180 | 8,36 | 4,83 | | 2,20 | 7400 | 65 | 87 | A | 2018 |
| CJBX/ALF-15/15-0.75 | 525 | 2,92 | 1,69 | | 0,55 | 5900 | 49 | 85 | B | 2018 |
| CJBX/ALF-15/15-1 IE3 | 595 | 3,10 | 1,79 | | 0,75 | 6500 | 52 | 86 | B | 2018 |
| CJBX/ALF-15/15-1.5 IE3 | 635 | 4,03 | 2,32 | | 1,10 | 7500 | 54 | 89 | B | 2018 |
| CJBX/ALF-15/15-2 IE3 | 670 | 5,96 | 3,44 | | 1,50 | 8200 | 56 | 93 | B | 2018 |
| CJBX/ALF-15/15-3 IE3 | 740 | 8,36 | 4,83 | | 2,20 | 9500 | 59 | 101 | B | 2018 |
| CJBX/ALF-15/15-4 IE3 | 805 | 10,96 | 6,33 | | 3,00 | 10600 | 61 | 103 | B | 2018 |
| CJBX/ALF-18/18-1.5 IE3 | 480 | 4,03 | 2,32 | | 1,10 | 9000 | 48 | 122 | B | 2018 |
| CJBX/ALF-18/18-2 IE3 | 605 | 5,96 | 3,44 | | 1,50 | 9250 | 51 | 125 | B | 2018 |
| CJBX/ALF-18/18-3 IE3 | 590 | 8,36 | 4,83 | | 2,20 | 11500 | 54 | 134 | B | 2018 |
| CJBX/ALF-18/18-4 IE3 | 640 | 10,96 | 6,33 | | 3,00 | 13200 | 56 | 136 | B | 2018 |
| CJBX/ALF-18/18-5.5 IE3 | 675 | 14,10 | 8,12 | | 4,00 | 15000 | 58 | 141 | B | 2018 |
| CJBX/ALF-18/18-7.5 IE3 | 760 | | 11,60 | 6,72 | 5,50 | 17000 | 60 | 155 | B | 2018 |
| CJBX/ALF-20/20-2 IE3 | 430 | 5,96 | 3,44 | | 1,50 | 11500 | 56 | 222 | B | 2018 |
| CJBX/ALF-20/20-3 IE3 | 530 | 8,36 | 4,83 | | 2,20 | 12800 | 57 | 231 | B | 2018 |
| CJBX/ALF-20/20-4 IE3 | 575 | 10,96 | 6,33 | | 3,00 | 14200 | 58 | 233 | B | 2018 |
| CJBX/ALF-20/20-5.5 IE3 | 635 | 14,10 | 8,12 | | 4,00 | 15500 | 61 | 238 | B | 2018 |
| CJBX/ALF-20/20-7.5 IE3 | 675 | | 11,60 | 6,72 | 5,50 | 17500 | 63 | 252 | B | 2018 |
| CJBX/ALF-20/20-10 IE3 | 725 | | 13,90 | 8,06 | 7,50 | 20000 | 65 | 283 | B | 2018 |
| CJBX/ALF-22/22-2 IE3 | 385 | 5,96 | 3,44 | | 1,50 | 14000 | 50 | 250 | B | 2018 |
| CJBX/ALF-22/22-3 IE3 | 475 | 8,36 | 4,83 | | 2,20 | 15000 | 54 | 257 | B | 2018 |
| CJBX/ALF-22/22-4 IE3 | 515 | 10,96 | 6,33 | | 3,00 | 17000 | 55 | 261 | B | 2018 |
| CJBX/ALF-22/22-5.5 IE3 | 570 | 14,10 | 8,12 | | 4,00 | 19000 | 57 | 265 | B | 2018 |
| CJBX/ALF-22/22-7.5 IE3 | 605 | | 11,60 | 6,72 | 5,50 | 21500 | 60 | 279 | B | 2018 |
| CJBX/ALF-22/22-10 IE3 | 675 | | 13,90 | 8,06 | 7,50 | 25000 | 63 | 306 | B | 2018 |
| CJBX/ALF-22/22-15 IE3 | 765 | | 20,90 | 12,10 | 11,00 | 27000 | 65 | 341 | B | 2018 |
| CJBX/ALF-25/25-3 IE3 | 375 | 8,36 | 4,83 | | 2,20 | 17000 | 53 | 297 | B | 2018 |
| CJBX/ALF-25/25-4 IE3 | 405 | 10,96 | 6,33 | | 3,00 | 20500 | 55 | 299 | B | 2018 |
| CJBX/ALF-25/25-5.5 IE3 | 450 | 14,10 | 8,12 | | 4,00 | 22000 | 57 | 304 | B | 2018 |
| CJBX/ALF-25/25-7.5 IE3 | 485 | | 11,60 | 6,72 | 5,50 | 24500 | 59 | 318 | B | 2018 |
| CJBX/ALF-25/25-10 IE3 | 545 | | 13,90 | 8,06 | 7,50 | 28000 | 61 | 345 | B | 2018 |
| CJBX/ALF-25/25-15 IE3 | 610 | | 20,90 | 12,10 | 11,00 | 32000 | 64 | 374 | B | 2018 |
| CJBX/ALF-30/28-3 IE3 | 330 | 8,36 | 4,83 | | 2,20 | 20000 | 54 | 380 | B | 2018 |
| CJBX/ALF-30/28-4 IE3 | 360 | 10,96 | 6,33 | | 3,00 | 22000 | 56 | 382 | B | 2018 |
| CJBX/ALF-30/28-5.5 IE3 | 380 | 14,10 | 8,12 | | 4,00 | 25000 | 59 | 387 | B | 2018 |
| CJBX/ALF-30/28-7.5 IE3 | 380 | | 11,60 | 6,72 | 5,50 | 31500 | 60 | 402 | B | 2018 |
| CJBX/ALF-30/28-10 IE3 | 410 | | 13,90 | 8,06 | 7,50 | 36000 | 63 | 431 | B | 2018 |
| CJBX/ALF-30/28-15 IE3 | 430 | | 20,90 | 12,10 | 11,00 | 42000 | 65 | 451 | B | 2018 |
| CJBX/ALF-30/28-20 IE3 | 480 | | 27,90 | 16,20 | 15,00 | 48000 | 68 | 466 | B | 2018 |

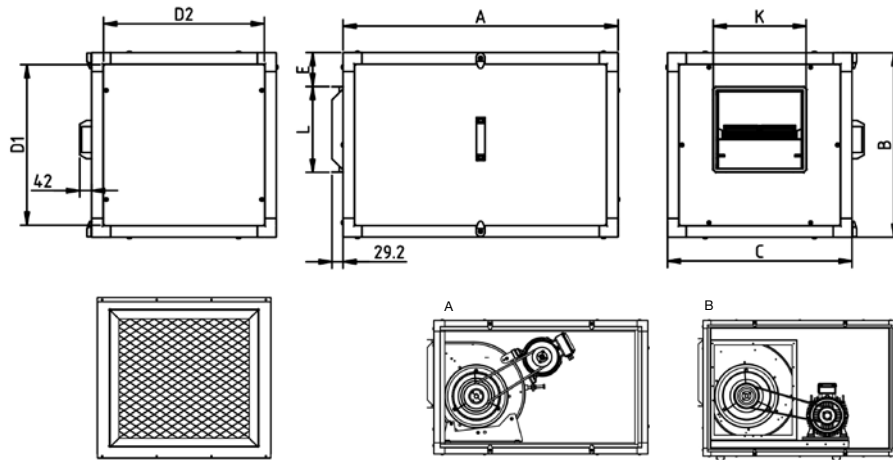


Erp. (Energy Related Products)

Información de la Directiva 2009/125/EC descargable desde la web de SODECA o programa de selección QuickFan

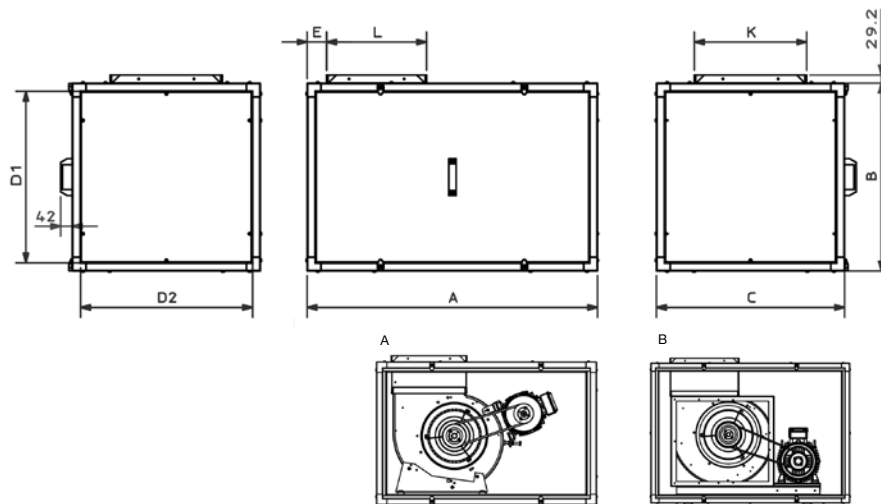
Dimensiones mm

CJBX/ALF
Suministro standard
impulsión horizontal
(H) LG 90



| | A | B | C | D1 | D2 | E | L | K | Tipo montaje |
|----------------|------|------|------|------|------|-----|-----|-----|--------------|
| CJBX/ALF-7/7 | 830 | 490 | 490 | 428 | 428 | 91 | 226 | 247 | A |
| CJBX/ALF-9/9 | 920 | 550 | 550 | 488 | 488 | 86 | 279 | 317 | A |
| CJBX/ALF-10/10 | 970 | 605 | 605 | 543 | 543 | 88 | 306 | 343 | A |
| CJBX/ALF-12/12 | 1050 | 680 | 680 | 618 | 618 | 84 | 360 | 404 | A |
| CJBX/ALF-15/15 | 1220 | 855 | 855 | 793 | 793 | 119 | 423 | 490 | B |
| CJBX/ALF-18/18 | 1356 | 1000 | 1000 | 938 | 938 | 137 | 498 | 554 | B |
| CJBX/ALF-20/20 | 1500 | 1195 | 1195 | 1115 | 1115 | 140 | 615 | 615 | B |
| CJBX/ALF-22/22 | 1600 | 1250 | 1250 | 1170 | 1170 | 104 | 705 | 668 | B |
| CJBX/ALF-25/25 | 1870 | 1450 | 1450 | 1370 | 1370 | 200 | 792 | 767 | B |
| CJBX/ALF-30/28 | 1975 | 1670 | 1670 | 1590 | 1590 | 188 | 938 | 896 | B |

CJBX/ALF
Bajo demanda
impulsión vertical
(V) LG 0

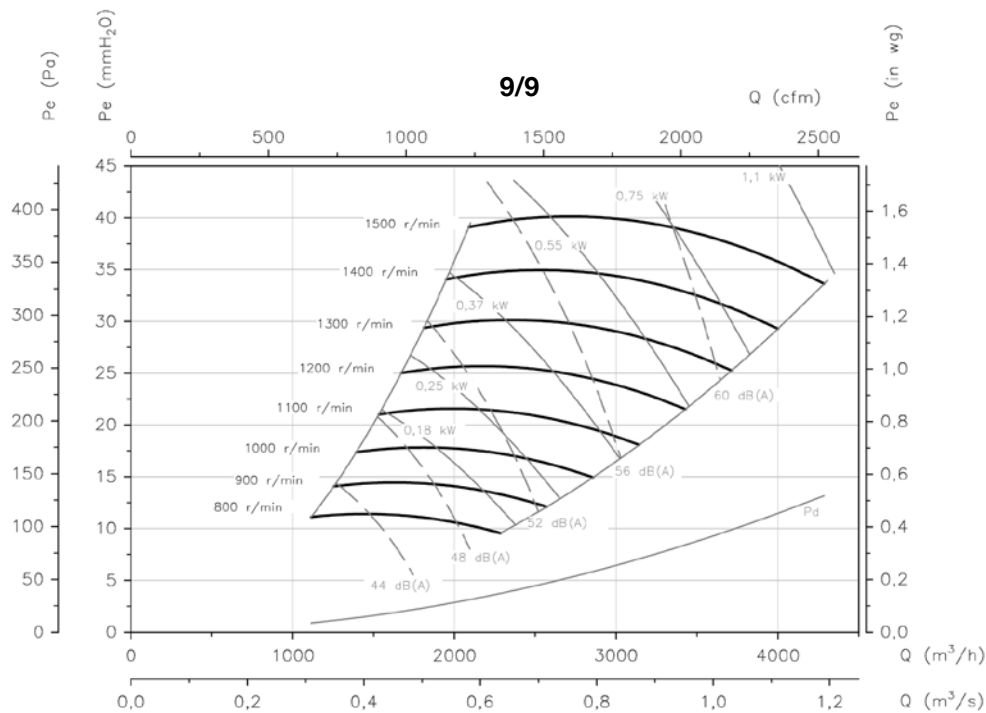
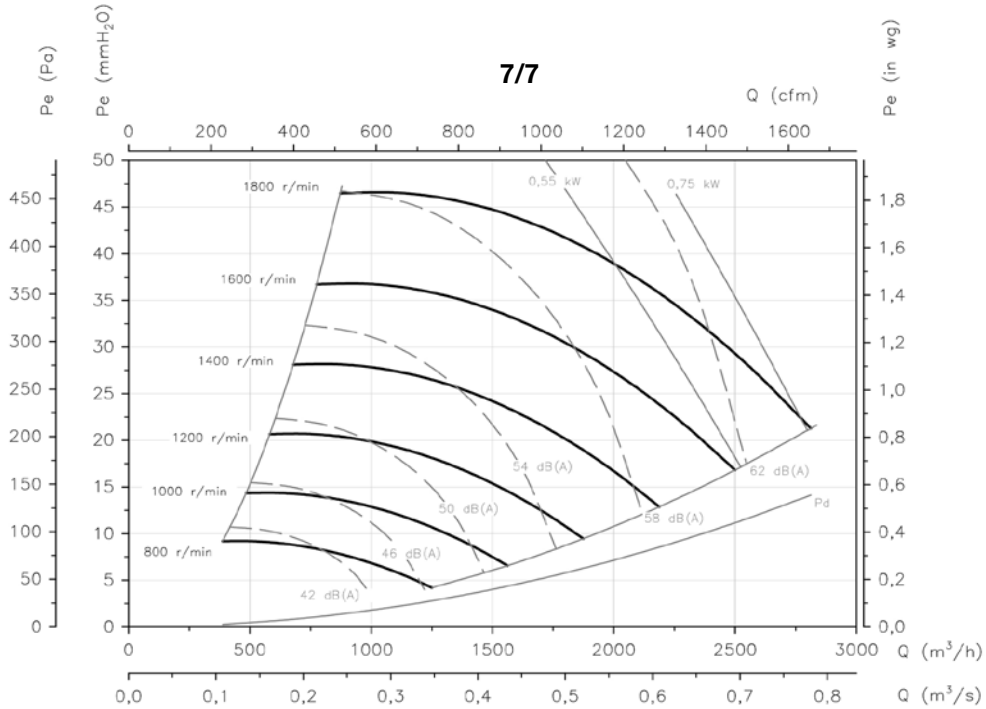


| | A | B | C | D1 | D2 | E | L | K | Tipo montaje |
|----------------|------|------|------|------|------|-----|-----|-----|--------------|
| CJBX/ALF-7/7 | 830 | 490 | 490 | 428 | 428 | 63 | 226 | 247 | A |
| CJBX/ALF-9/9 | 920 | 550 | 550 | 488 | 488 | 85 | 279 | 317 | A |
| CJBX/ALF-10/10 | 970 | 605 | 605 | 543 | 543 | 87 | 306 | 343 | A |
| CJBX/ALF-12/12 | 1050 | 680 | 680 | 618 | 618 | 69 | 360 | 404 | A |
| CJBX/ALF-15/15 | 1220 | 855 | 855 | 793 | 793 | 115 | 423 | 490 | B |
| CJBX/ALF-18/18 | 1356 | 1000 | 1000 | 938 | 938 | 80 | 498 | 554 | B |
| CJBX/ALF-20/20 | 1500 | 1195 | 1195 | 1115 | 1115 | 125 | 615 | 615 | B |
| CJBX/ALF-22/22 | 1600 | 1250 | 1250 | 1170 | 1170 | 125 | 705 | 668 | B |
| CJBX/ALF-25/25 | 1870 | 1450 | 1450 | 1370 | 1370 | 85 | 792 | 767 | B |
| CJBX/ALF-30/28 | 1975 | 1670 | 1670 | 1590 | 1590 | 155 | 938 | 896 | B |

Curvas características

Q= Caudal en m³/h, m³/s y cfm

Pe= Presión estática en mmH₂O, Pa e inwg

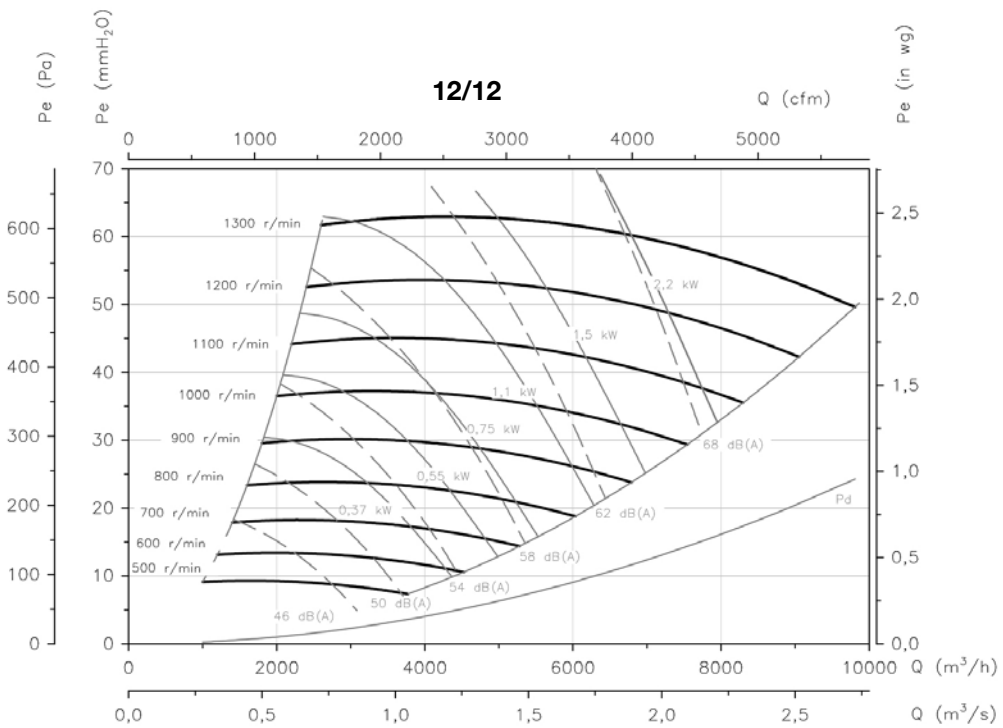
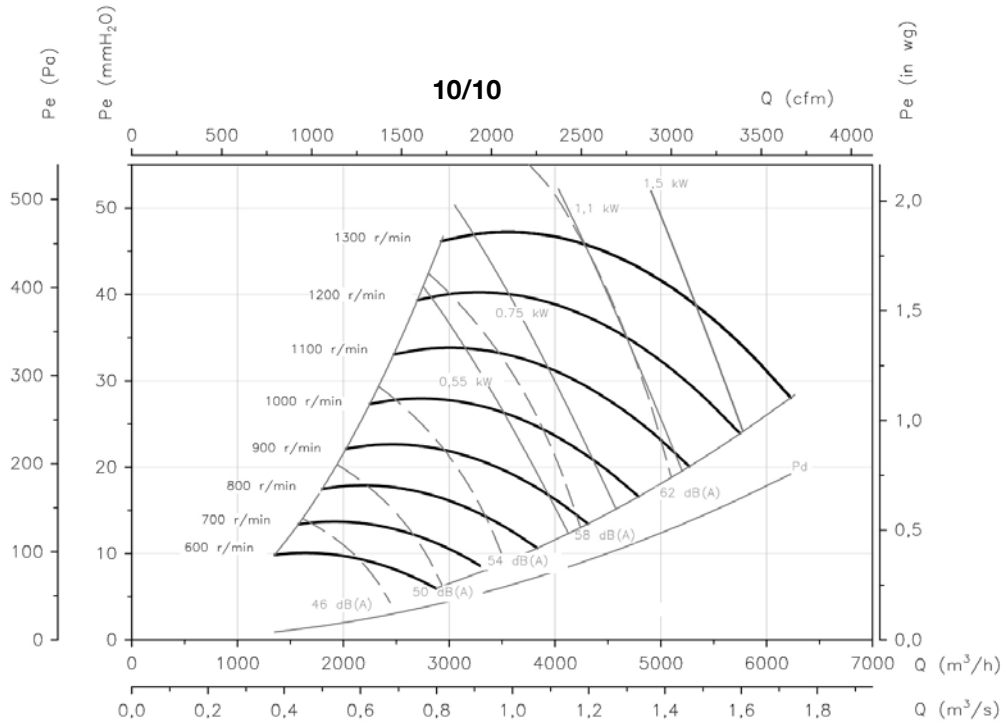


UNIDADES DE FILTRACIÓN Y DESINFECCIÓN

Curvas características

Q= Caudal en m³/h, m³/s y cfm

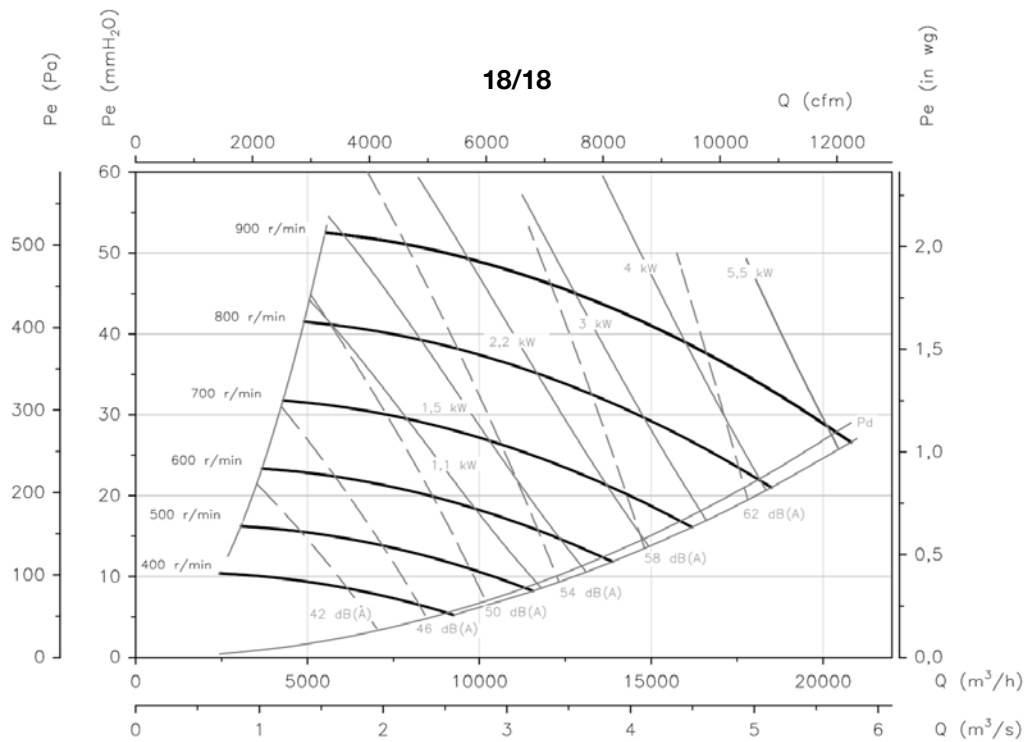
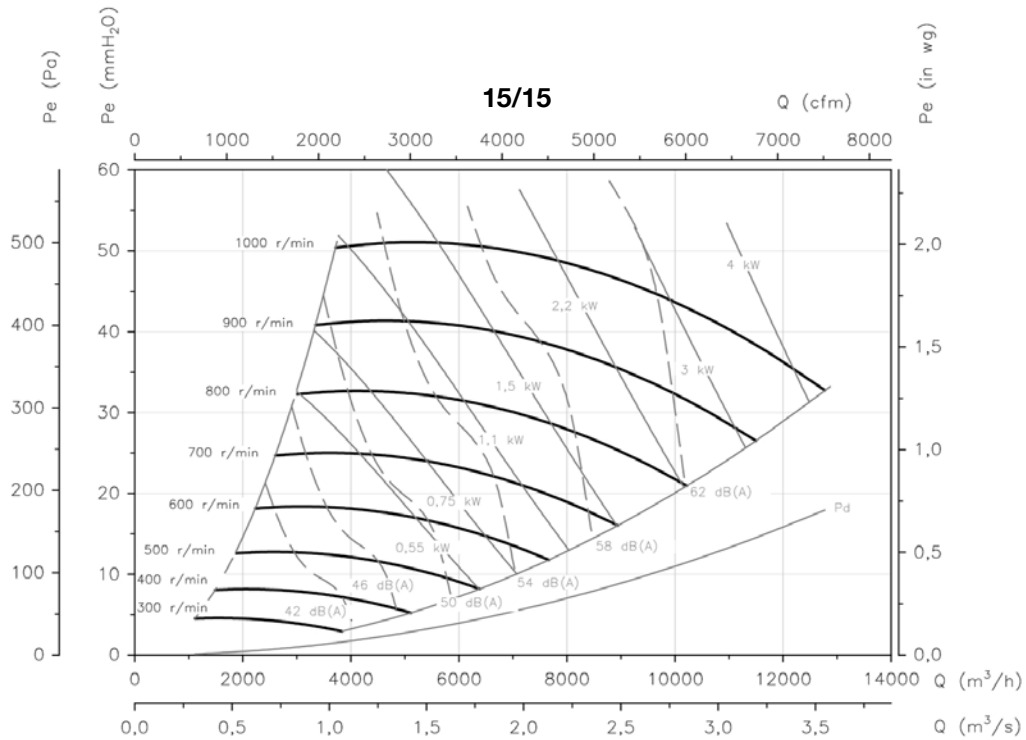
Pe= Presión estática en mmH₂O, Pa e inwg



Curvas características

Q= Caudal en m³/h, m³/s y cfm

Pe= Presión estática en mmH₂O, Pa e inwg

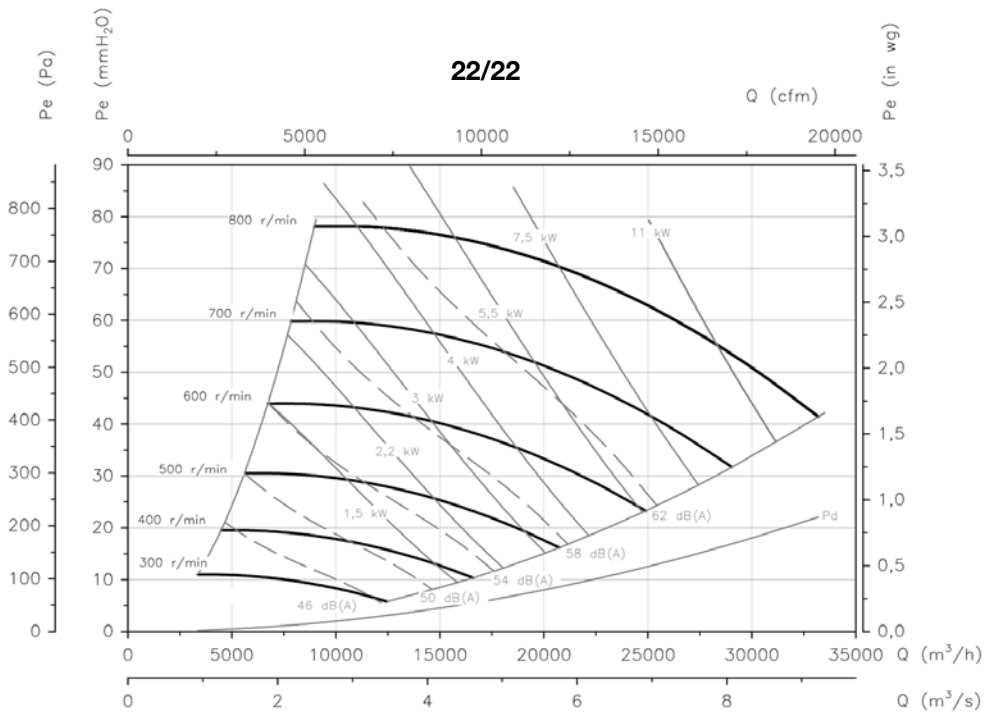
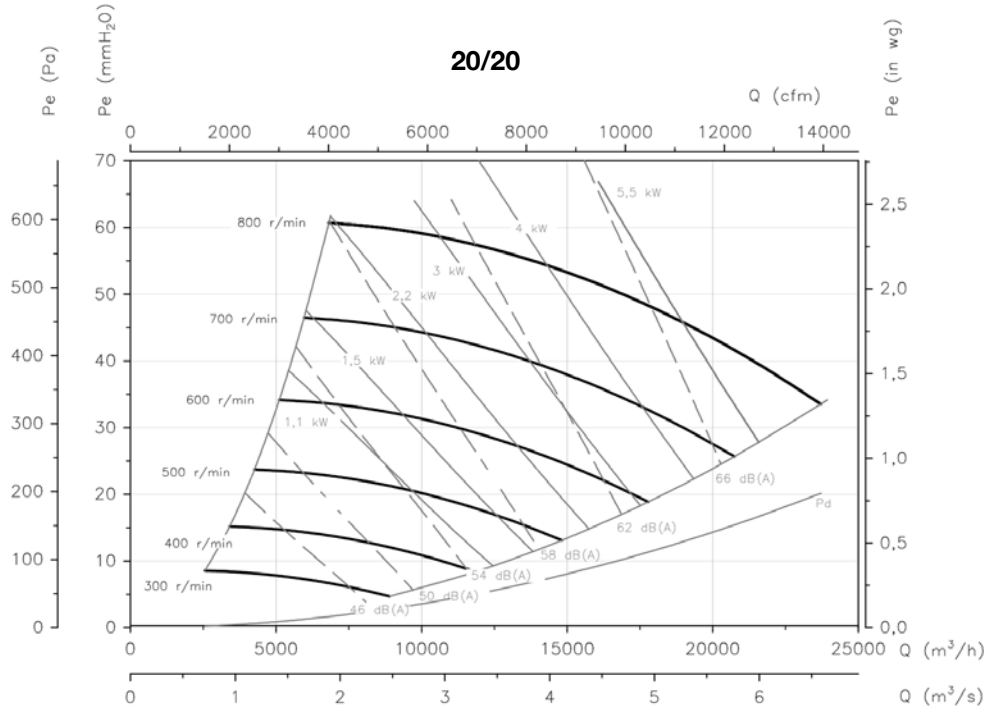


UNIDADES DE FILTRACIÓN Y DESINFECCIÓN

Curvas características

Q= Caudal en m³/h, m³/s y cfm

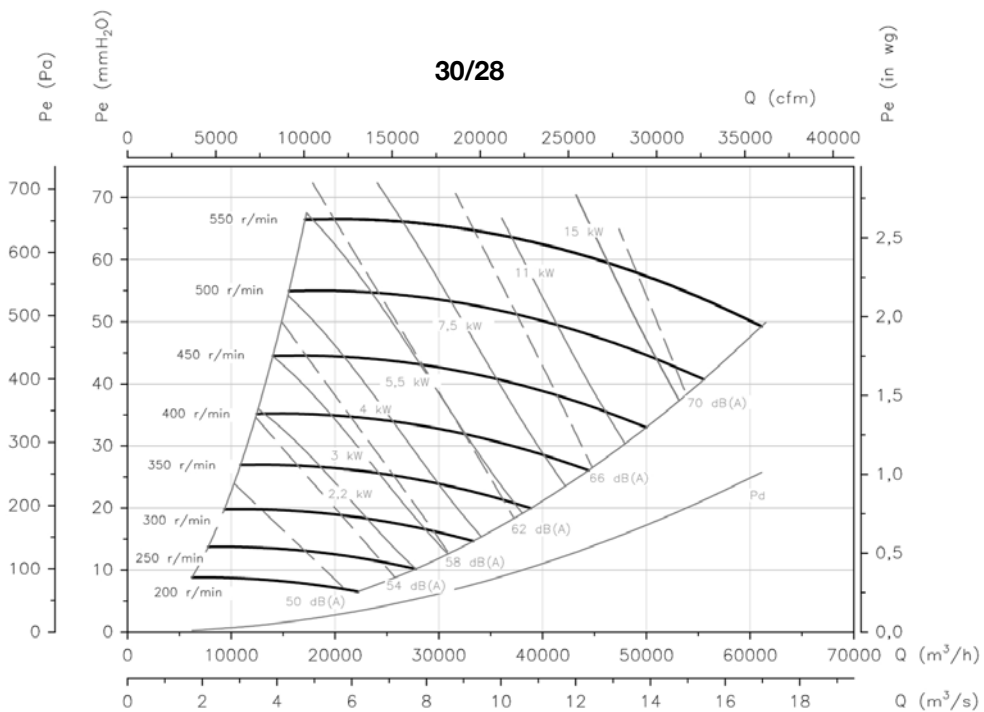
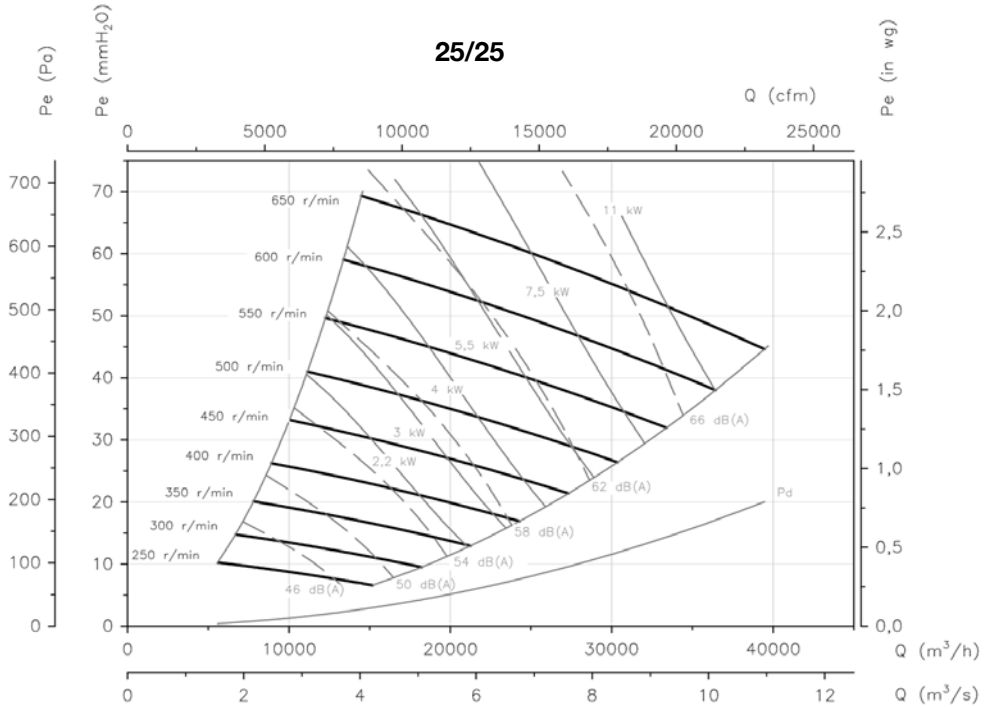
Pe= Presión estática en mmH₂O, Pa e inwg



Curvas características

Q= Caudal en m³/h, m³/s y cfm

Pe= Presión estática en mmH₂O, Pa e inwg



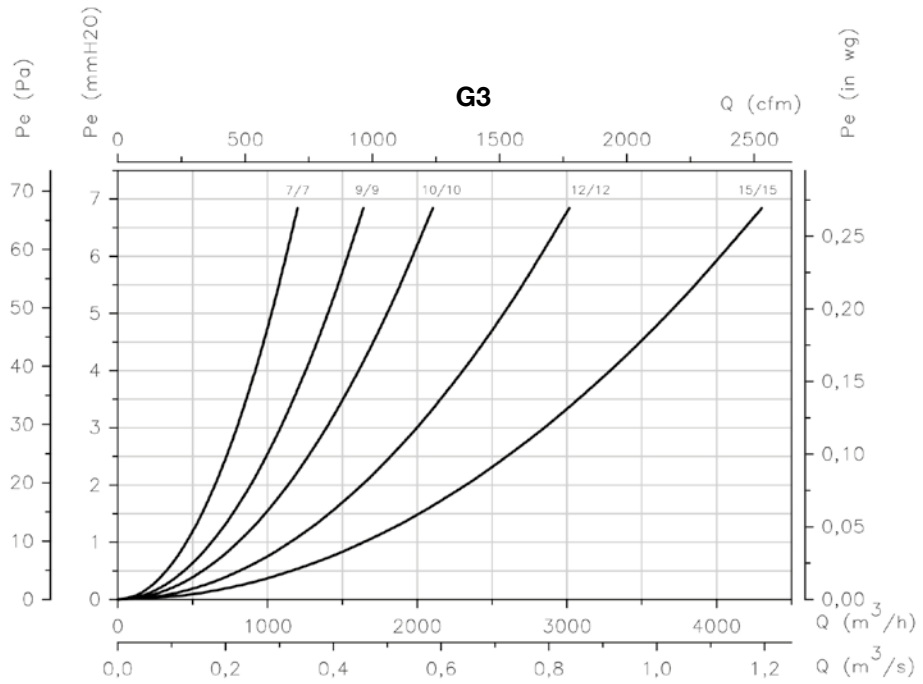
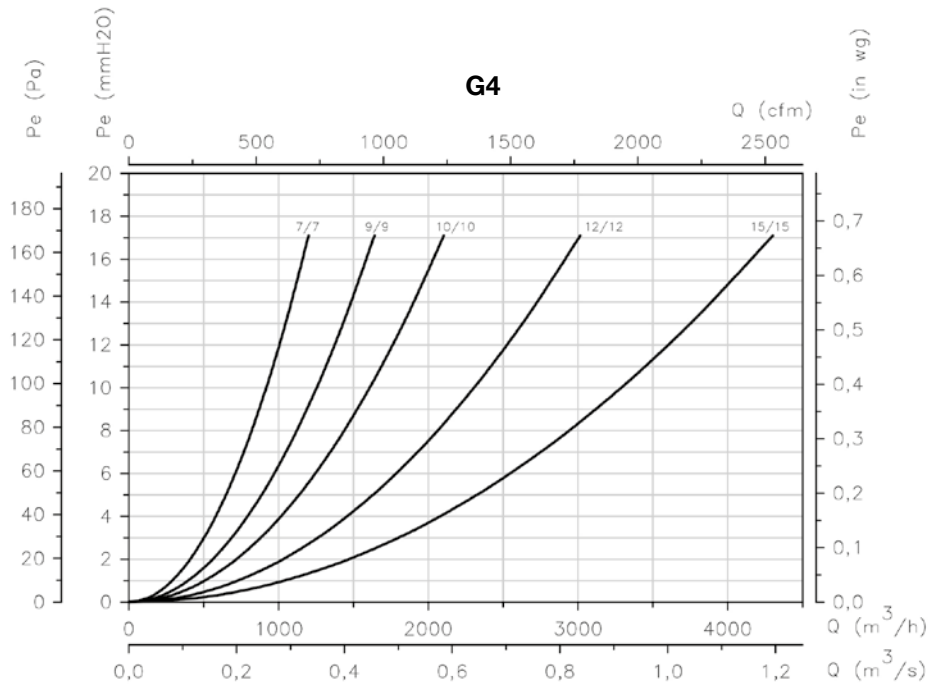
UNIDADES DE FILTRACIÓN Y DESINFECCIÓN

Curvas características

Q= Caudal en m³/h, m³/s y cfm

Pe= Presión estática en mmH₂O, Pa e inwg

Curvas de pérdida de carga de las unidades con filtro

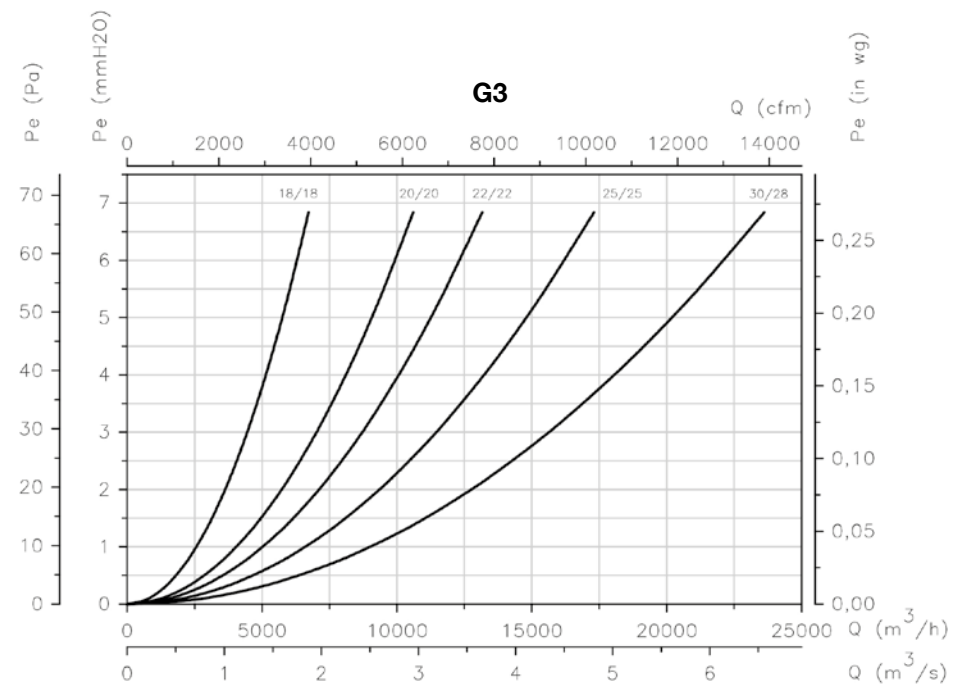
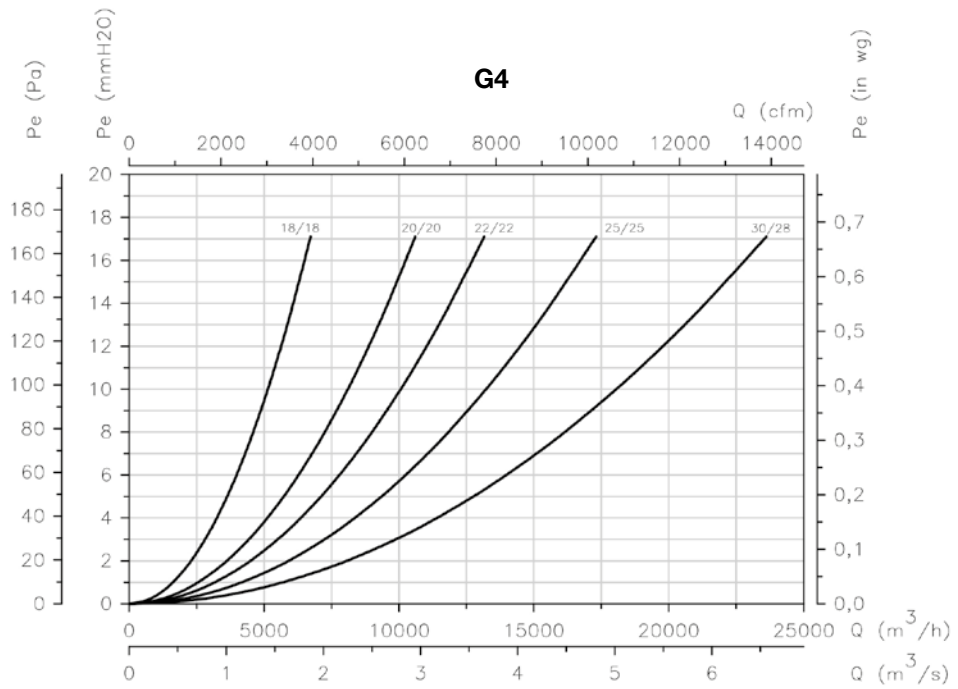


Curvas características

Q= Caudal en m³/h, m³/s y cfm

Pe= Presión estática en mmH₂O, Pa e inwg

Curvas de pérdida de carga de las unidades con filtro



Accesorios



UNIDADES DE FILTRACIÓN Y DESINFECCIÓN